

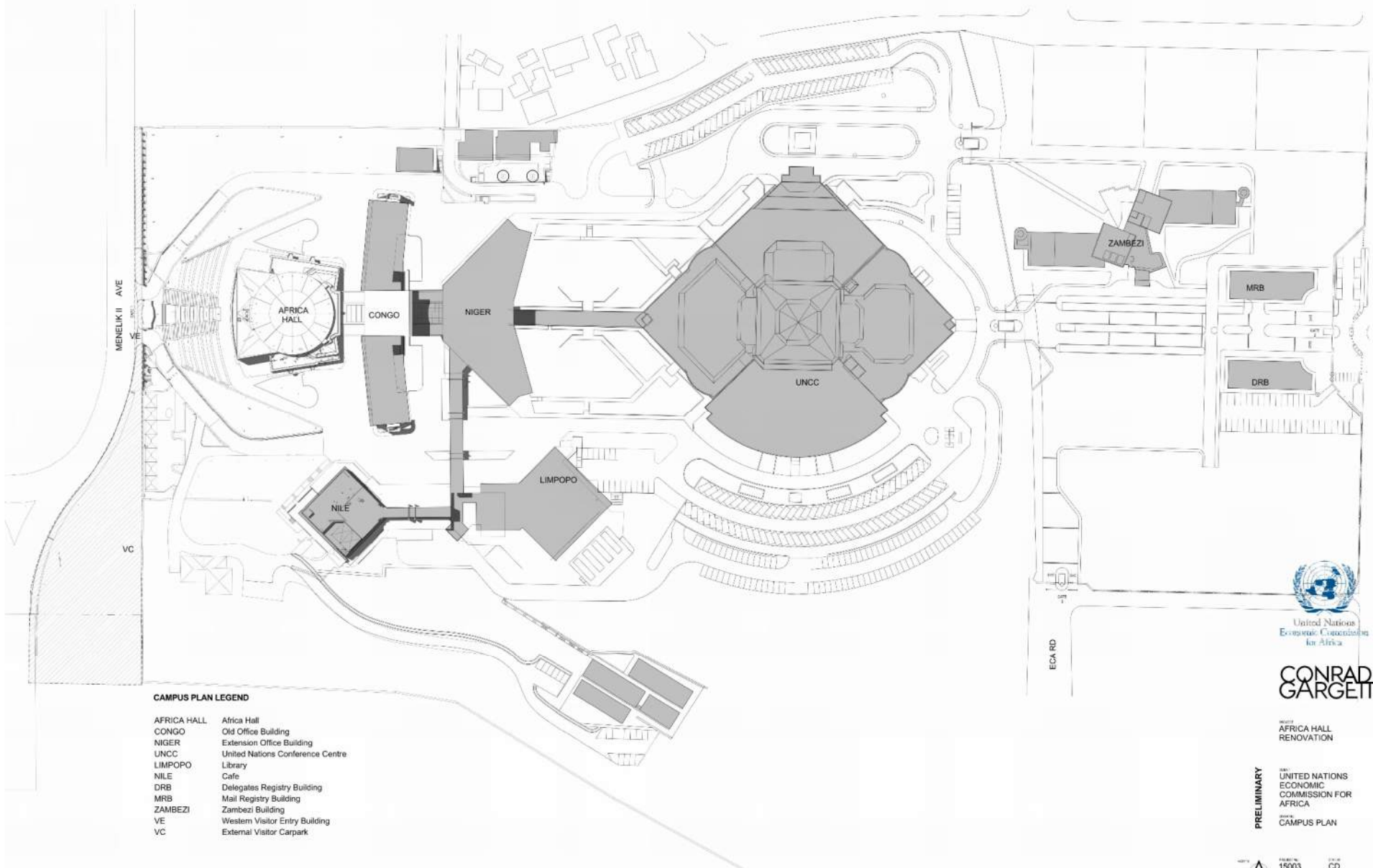
United Nations Economic Commission for Africa Africa Hall Project Equitable Access



Africa Hall Project Objectives

- First major project of the Strategic Capitol Plan
- Enhance the significance of Africa Hall by undertaking a renovation and restoration process based on a clear understanding of the place;
- Undertake restoration of the building based on an understanding of the original design intent;
- Construction work guided by international best practices and input from internal and external stakeholders;
- Deliver a modern conference facility
- Provide access to ensure safety and dignity of all users
- Provide a permanent exhibition which highlights the key events and the role in which Africa Hall has played in shaping Pan-African history.

SCALE: 1:500
 DATE: 2011
 DRAWN BY: [Name]
 CHECKED BY: [Name]
 APPROVED BY: [Name]



CAMPUS PLAN LEGEND

- AFRICA HALL Africa Hall
- CONGO Old Office Building
- NIGER Extension Office Building
- UNCC United Nations Conference Centre
- LIMPOPO Library
- NILE Cafe
- DRB Delegates Registry Building
- MRB Mail Registry Building
- ZAMBEZI Zambezi Building
- VE Western Visitor Entry Building
- VC External Visitor Carpark



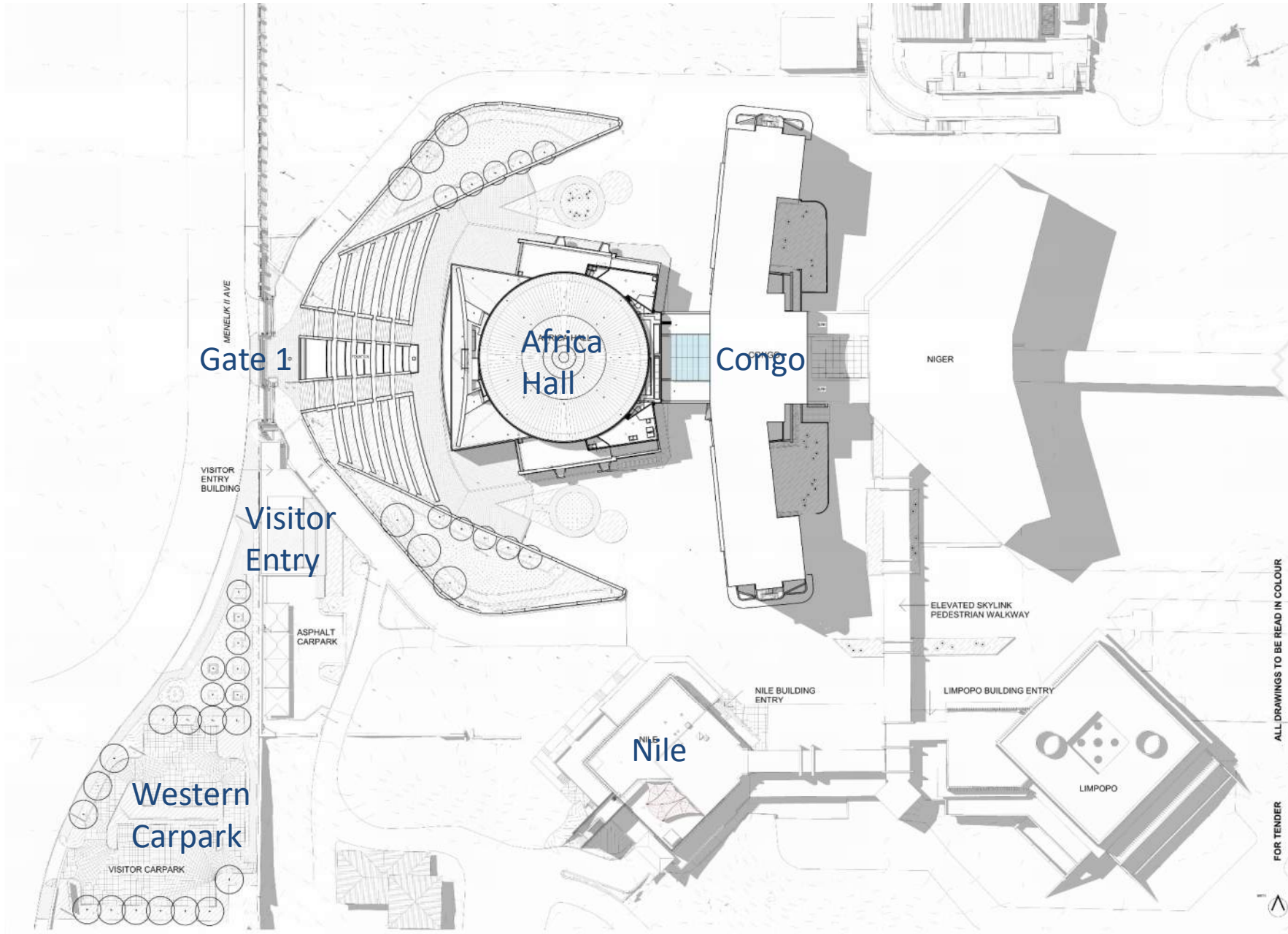
United Nations
 Economic Commission
 for Africa

**CONRAD
 GARGETT**

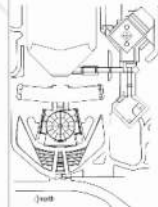
AFRICA HALL
 RENOVATION

PRELIMINARY
 THE UNITED NATIONS
 ECONOMIC COMMISSION FOR
 AFRICA
 CAMPUS PLAN

SCALE: 1:500
 DATE: 2011
 DRAWN BY: [Name]
 CHECKED BY: [Name]
 APPROVED BY: [Name]



United Nations
Economic Commission
for Africa



CONRAD
GARGETT

ALL DRAWINGS TO BE READ IN COLOUR

WEST AFRICA HALL RENOVATION

FOR TENDER
THE UNITED NATIONS
ECONOMIC COMMISSION FOR
AFRICA
PROPOSED PRECINCT
PLAN

NO. 15003 CD
REV. AR-1002 A 1:250

Proposed Gross Floor Area

PROJECT AREAS (GFA)	
CONGO - <i>Retail Decant</i>	1,067 sqm
NILE - <i>Retail Decant</i>	1,133 sqm
AFRICA HALL AND CONGO LOBBY – <i>Main Contract</i>	5,714 sqm
VISITOR ENTRY BUILDING – <i>Main Contract</i>	229 sqm
TOTAL PROJECT - Gross Floor Area	8,144 sqm

Project Yield

AFRICA HALL STATS		
PLENARY HALL	DELEGATES SUPPORT	112 (56 pairs) 142
Africa Hall total seating capacity		470 Including accessible seating locations
Rotunda Function Space		300 Seat
Exhibition Theatrette		20 seat
Rotunda Cafe		200 seat
Western Carpark		32 + Bus setdown
Visitor Entry Building		44 seat
Upgrades or New Landscape		6,913 sqm

The project consists of the refurbishment of Africa Hall and small works to adjacent buildings.

Improving accessibility within the building is a primary goal of the project and as such, strategies have been developed to maximise access for people with disabilities within the buildings.

A study of international accessibility standards has been conducted as a part of the project to ensure recommendations made for the Africa Hall Refurbishment concerning accessibility are in keeping with international best practice measures and reflect the progressive nature of accessibility legislation.

The highlighted sections of the table represent the highest benchmark for the listed accessibility issue.

	Australia AS1428.1 (2009)	UK BS 8300 (2010)	USA ADA Standards (2010)	Singapore Accessibility Code (2013)	International Standard ISO 21542 (2011)
Wheelchair footprint	800x1300	900x1400	760 x 1220	N/A	N/A
Carparking	2400+2400 shared space	2400+ 1200+1200	2440+1525 (car)	3600x5400	3900x5400
Accessway	1000 wide, 1200 preferred	1500-1800 dependent on use	915 wide	1500-1800 dependent on use	900 wide
180 Turning Space	1540x2070	1800 dia	1525 X 1525 T-shape	1500x2000	1500x1500
Passing Area	1800x2070 at 20m intervals	1800x2000 at 25m intervals	1525 X 1525 at 61m intervals	1800x1800 at 50m intervals	1800x2000 at 25m intervals
Door Opening Width	850	800/825	815	850	800 (850 recommended)
Door Circulation	av. 530 at latch side	av. 300 at latch side	av. 455 at latch side	av. 300 at latch side	av. 600 at latch side
Step Ramp Gradient	1:10	1:12	1:8 – 75 rise 1:10 – 150 rise	1:10	1:12
Ramp Gradient	1:14	1:20	1:12	1:12	1:20
Ramp Length	9m	10m	9.125m	9m	10m
Accessible Toilet Dimensions	1900x2300 + handbasin	1500x2200 + handbasin	1525x1500 + handbasin	1750x1750	1700x2200
Ambulant Toilet Dimensions	900-920x 1650min	800x1500	890-940x 1525	900x1750	900x 1650min
Lift Dimensions	1100x1400 up to 12m rise 1400x1600 over 12m rise	1100x1400 one user 2000x1400 multiple users	1065x1370	1200x1400	1100x1400
Signage Requirements	Braille & Tactile	Braille & Tactile	Braille & Tactile	Braille & Tactile	Braille & Tactile

Local Perspective

Unlike international disability legislation, there is no human-rights-based disability legislation applicable in Ethiopia. Accessibility within the built environment is addressed through building standards.

The Ethiopian Building Code Standard General – Building Spatial Design 2013 (EBCS-G) defines accessible as *a site, building, facility or portion thereof that can be approached, entered and used by physically disabled persons.*

EBCS-G is not prescriptive, outlining key accessibility concepts to be considered in the design process. There is no mechanism to determine compliance of the concepts identified such as accessible route, accessible building, accessible facilities, accessible elements and accessible spaces. However, it is noted that the overall concepts for the provision of access for people with disabilities within EBCS-G is similar to the intent of accessibility codes found elsewhere.

Approach for Africa Hall Project

As the proposed building works associated with the Africa Hall Refurbishment are largely within existing buildings, the focus has been on improving accessibility. The proposed development is capable of achieving a high level of access for people with disabilities and meeting all the relevant standards.

While compliance is the ultimate goal, in some areas due to the existing building conditions, this is not achievable. In these cases, a performance based approach to accessibility has been adopted to ensure the design outcome is still inclusive and experientially, the same outcome is achieved.

An Accessibility Management Plan will be implemented by the UNECA to ensure accessibility is maximised where existing conditions are seen to compromise compliance.

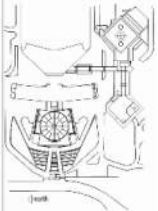


LEGEND

- 1. Ceremonial Steps / Waterfeature
- 2. Northern Grass Terrace
- 3. Southern Grass Terrace
- 4. Northern Embankment Wing
- 5. Southern Embankment Wing
- 6. Northern Tear Drop (Ornamental Garden)
- 7. Southern Tear Drop (Ornamental Garden)
- 8. Northern Woodland
- 9. Southern Woodland
- 10. Northern Africa Hall Terrace
- 11. Southern Africa Hall Terrace
- 12. Vehicle Gate 1 / Western Entry
- 13. Vehicle Movement
- 14. Western Carpark
- 15. Tree Courtyard / Turfed Area
- 16. Drop-off / Pick Up
- 17. Arrival Forecourt
- 18. Existing Stone Flooring



United Nations
Economic Commission
for Africa



ALL DRAWINGS TO BE READ IN COLOUR

CONRAD GARGETT

PROJECT: Africa Hall Renovation

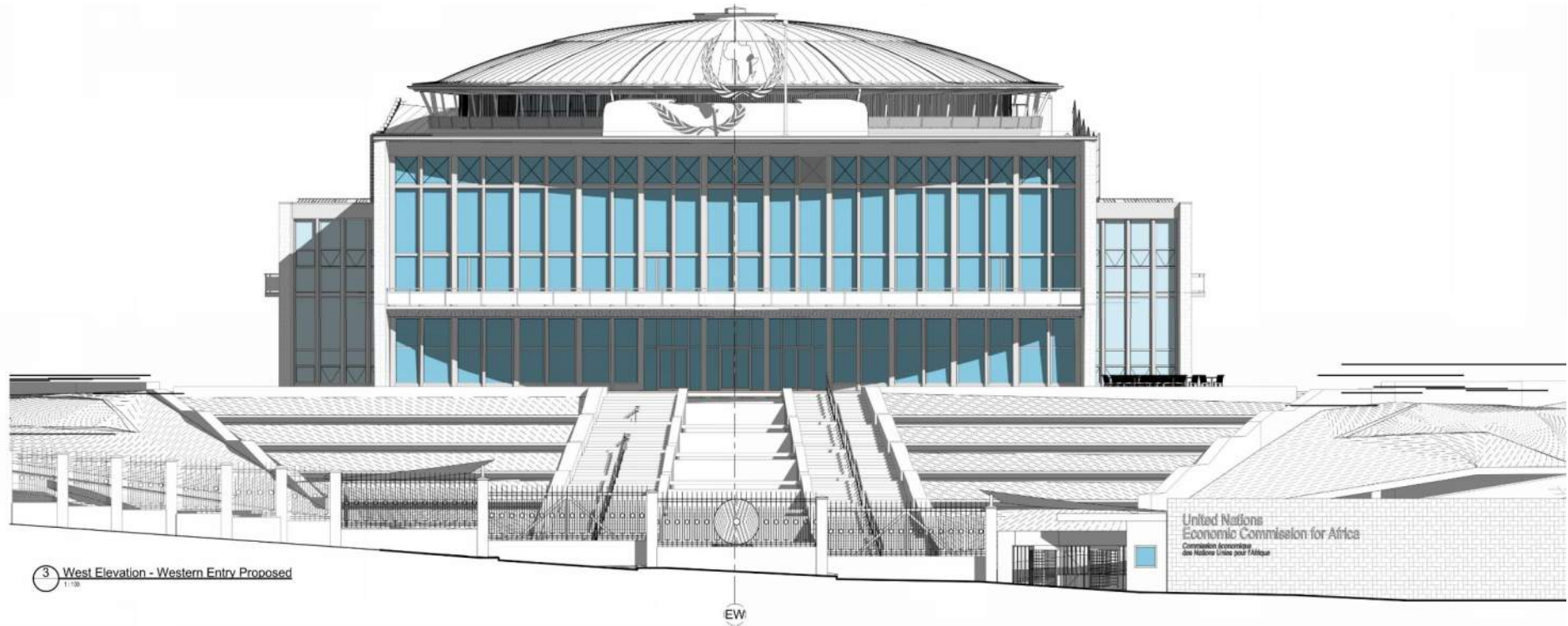
CLIENT: United Nations Economic Commission for Africa

TYPE: Landscape Masterplan



PROJECT NO: 15003
DRAWING NO: LA-0005
DATE: 01/11/15
SCALE: A 1:300

Western Elevation from Menelik II Ave

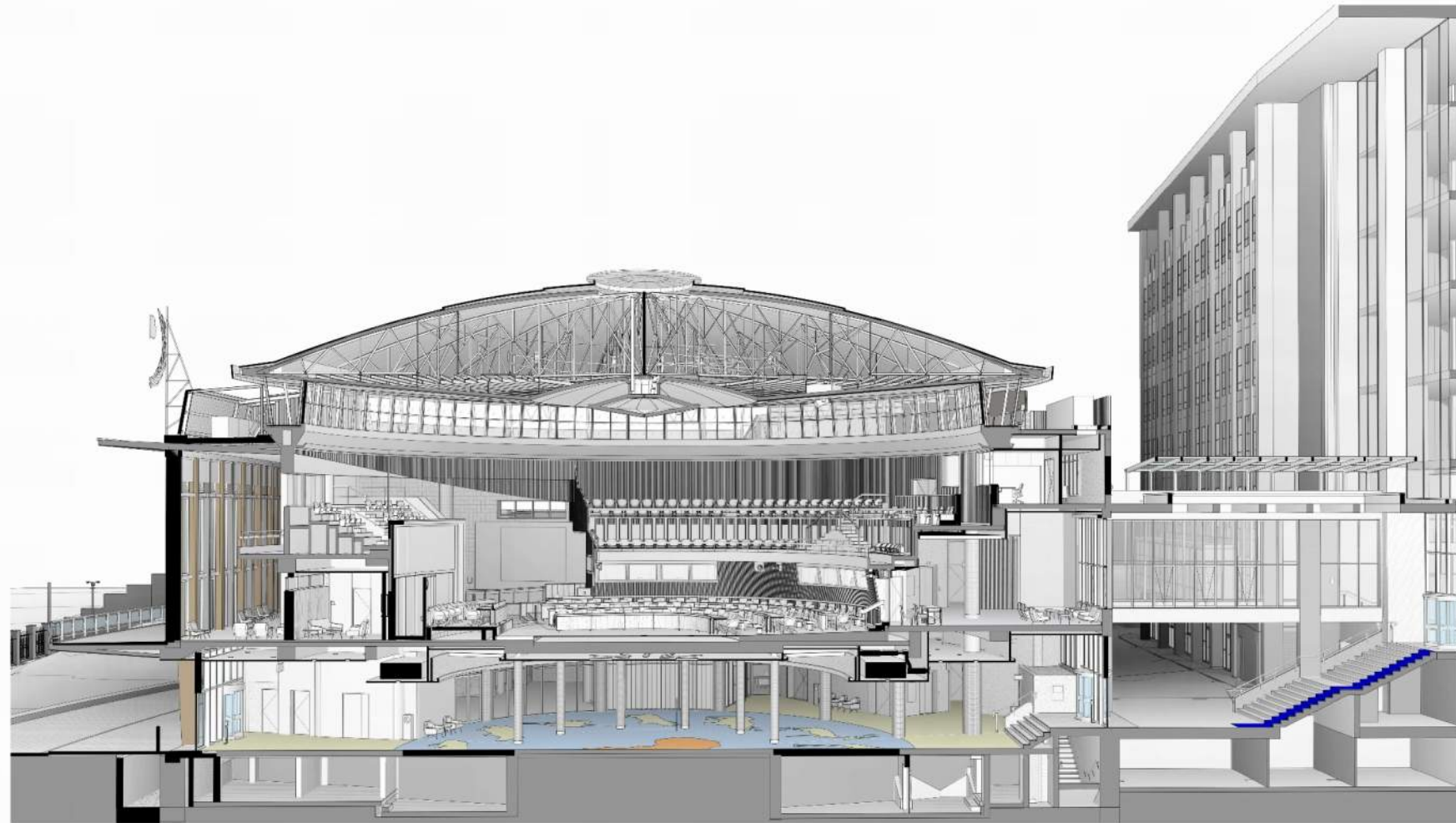


Western Visitor Entry Building



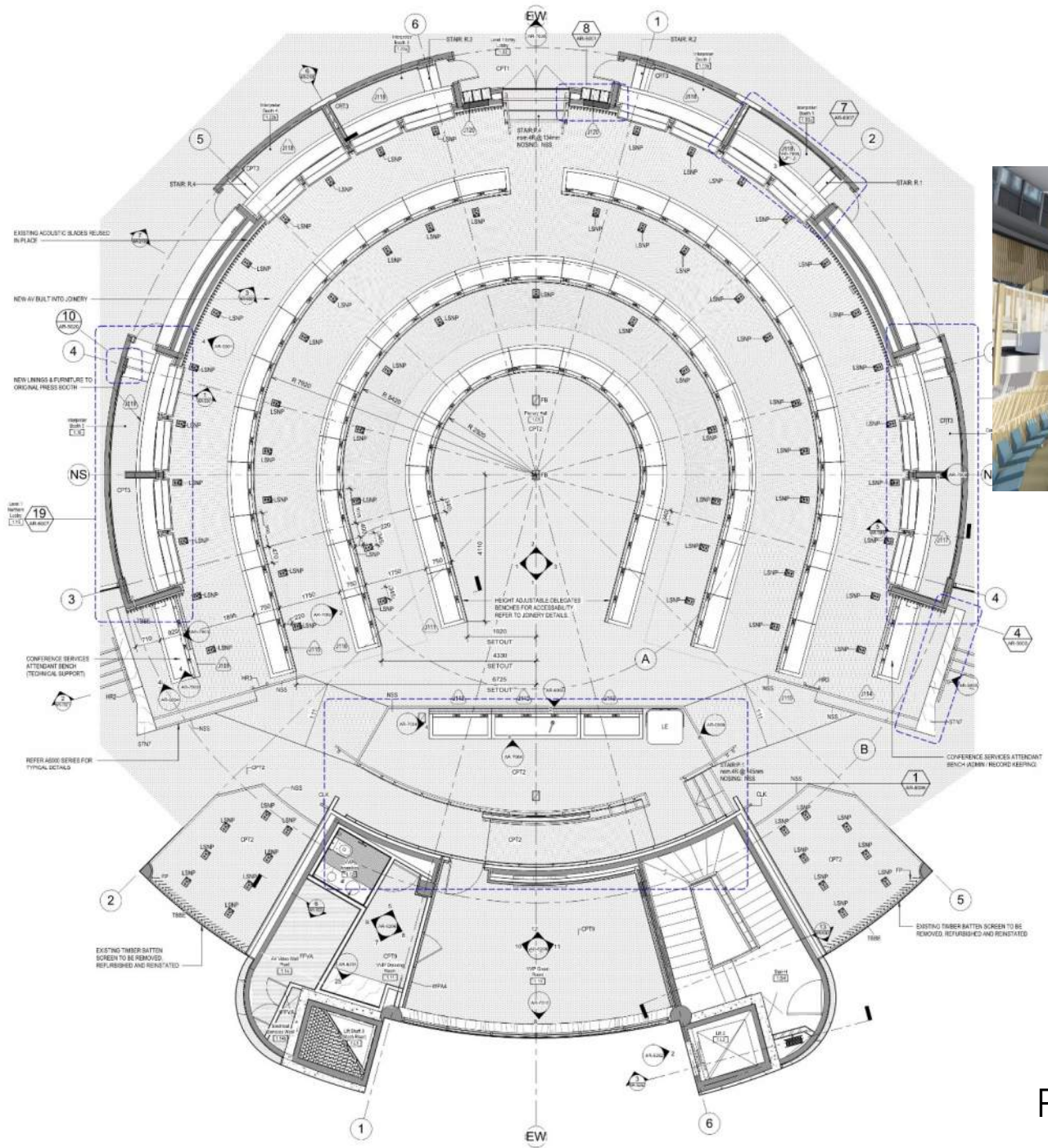
PERSPECTIVE SECTION - PROPOSED

UNITED NATIONS ECONOMIC COMMISSION FOR AFRICA

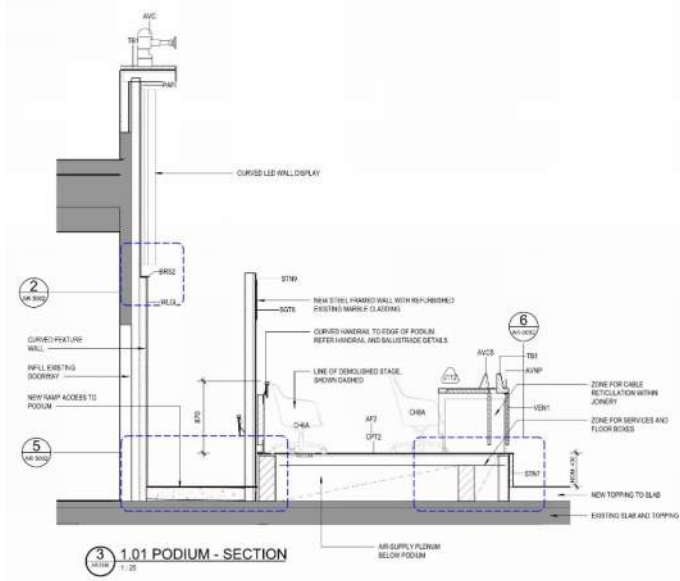


Plenary Hall

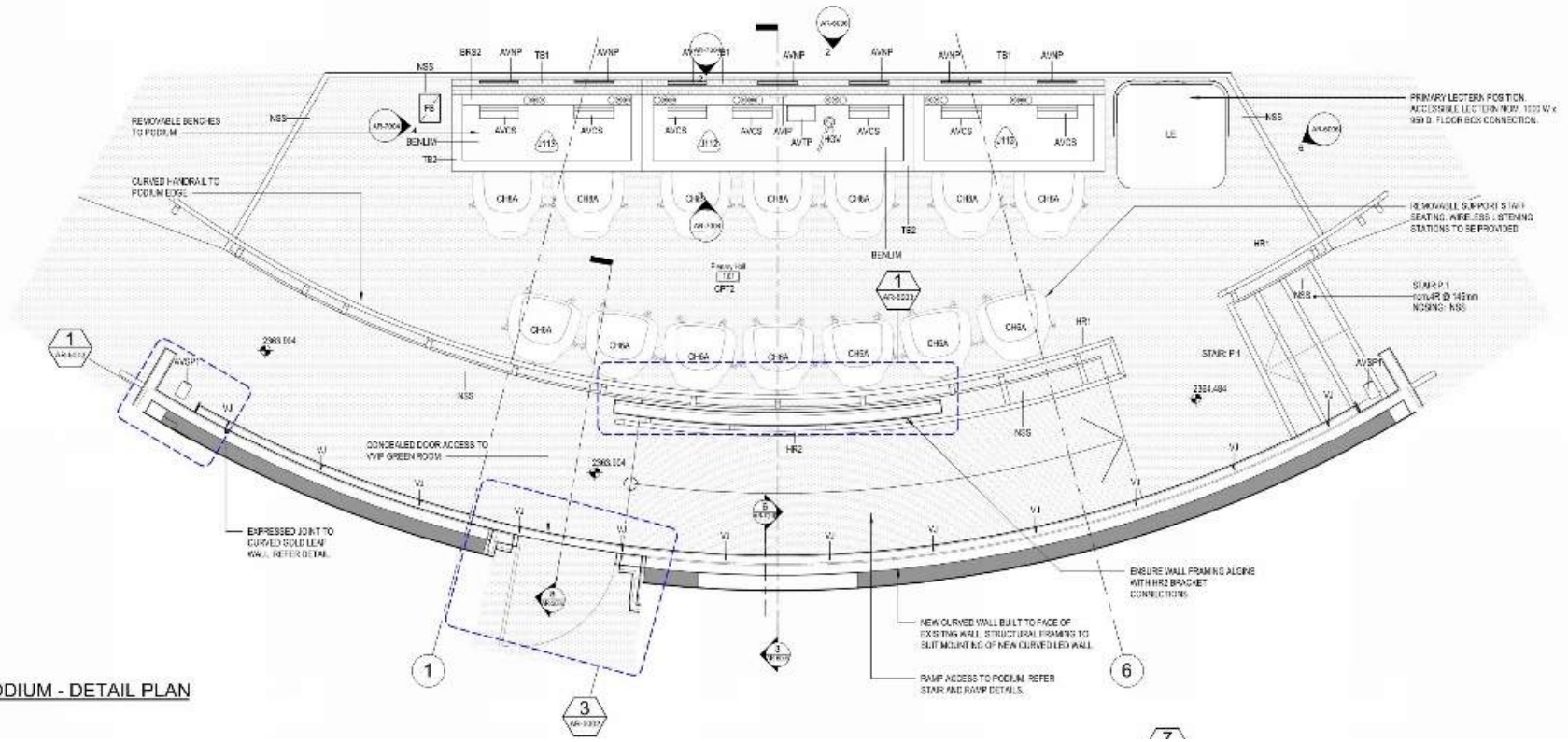




Plenary Hall Seating



3 1.01 PODIUM - SECTION
1:25



1 1.01 PODIUM - DETAIL PLAN
1:25

Performance Solutions for the Africa Hall Project

1. *Journey from Visitor Entry Building to Africa Hall*
2. *Plenary Hall / Events Booking System Generally*
3. *Press / Interpreters Lounge*
4. *Interpreter Booths*
5. *Step Ramp – Plenary Hall*
6. *Wheelchair Seating for Support Staff*
7. *Existing Double Doors to Juliet balconies*
8. *Decorative Door Hardware*
9. *Revolving Doors*
10. *Nile Building Access to First Floor*

Staff Accessibility Awareness Training

Attending staff should receive training in disability etiquette issues so as not to cause offence when offering assistance. Some major items in terms of etiquette include the following:

- 1. Avoid asking personal questions about a persons' disability.*
- 2. Be patient as it may take extra time for people with disabilities to respond to questions or complete tasks.*
- 3. Be polite when offering assistance and wait until the offer is accepted. Be prepared for your offer to be refused.*
- 4. Listen to any specific instructions from the people you are assisting.*
- 5. Use positive terminology – for example, person with a disability not disabled person. Do not use terms such as crippled, handicapped, invalid or retarded.*
- 6. Use a normal tone of voice – do not raise your voice unless you are asked to.*
- 7. Look and speak directly to the person with the disability, not the people accompanying them.*
- 8. Always respect a person's dignity, independence and individuality.*

Africa Hall - Programme

Retail Decant Construction – February 2018 – January 2019

Main Works Construction – October 2018 – June 2021

Use & Defects Liability period – 2020 - 2021